

Wisconsin Physician Value Report v2

Dana Richardson

CEO

Wisconsin Health Information Organization

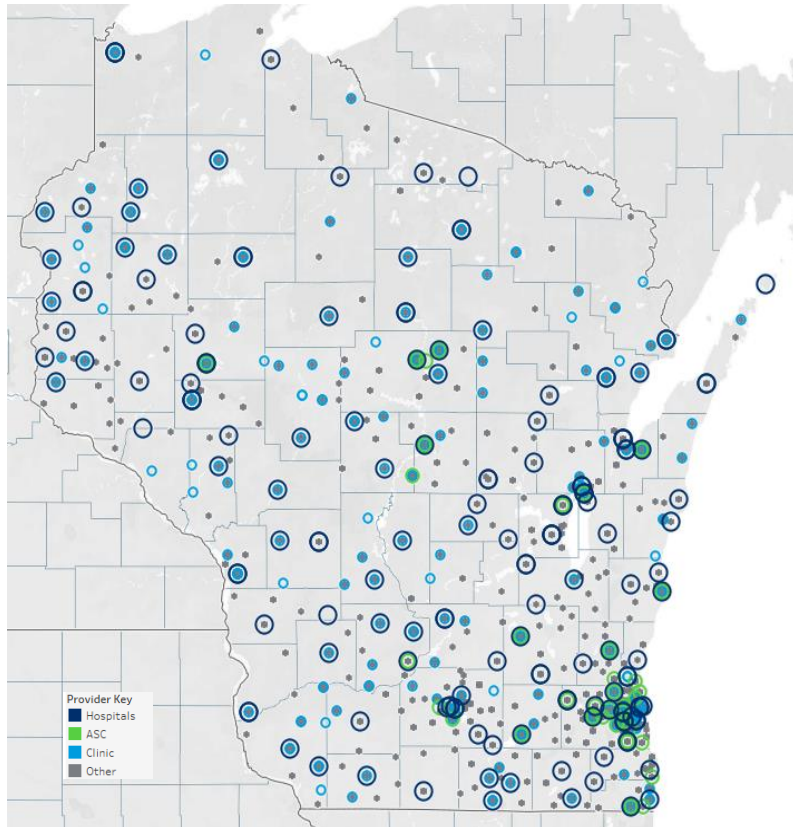


WI Physician Value Report v2

MARCH 30, 2022

A solid green horizontal bar at the bottom of the slide.

Wisconsin Health Information Organization (WHIO)



Vision: Better health, health care and health care value gained from objective information.

Mission: To create more health data and better information to advance actions.

- The WHIO was formed in 2008 as a public-private partnership between the State of Wisconsin and visionary private sector leaders to make information on Wisconsin's health care delivery system available to all.
- The WHIO is governed by a volunteer, multi-stakeholder Board of Directors with provider, payer, employer and state agency representative, as well as individuals with specific expertise.
- The WHIO is a non-profit organization that helps organizations who are committed to improving the health of Wisconsinites and the health care delivery system in Wisconsin.

Quick Facts

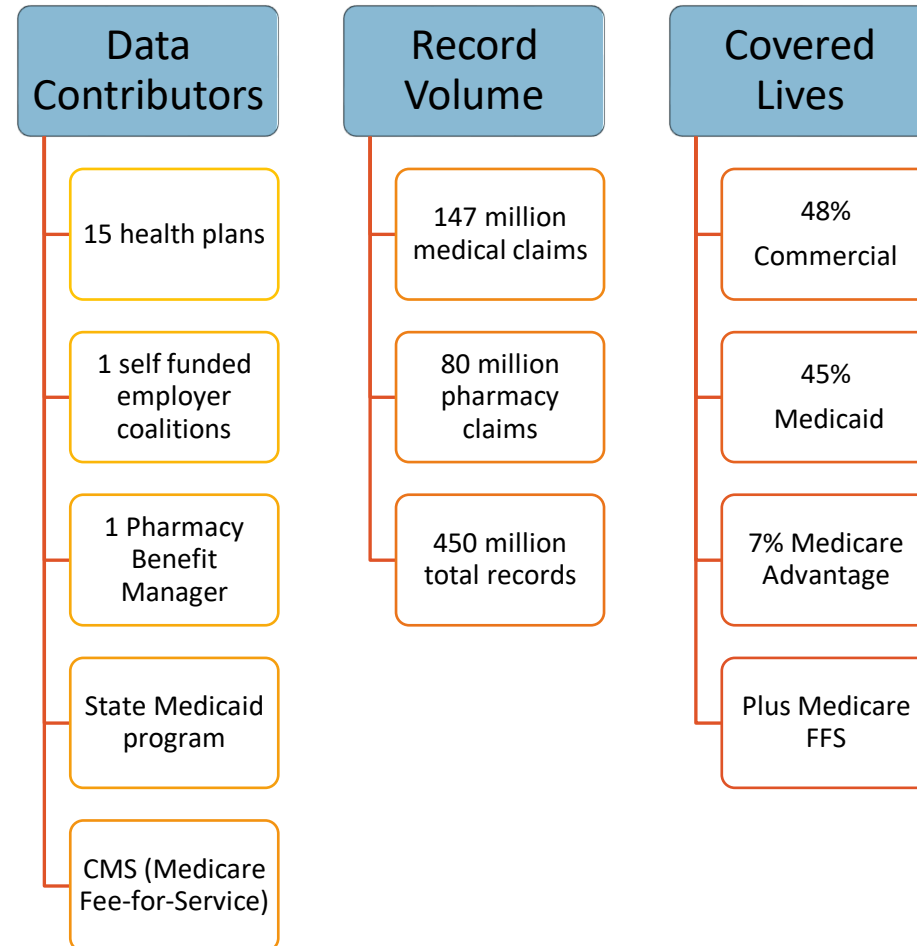
Advantage of using the WHIO data

- Results more accurately represent the care provided to an entire panel of patients for an organization and/or clinician the data includes different types of payment plans and patients with a variety of characteristics.
- Ability to use more stringent criteria/business decision in an analysis and have enough data to evaluate a larger number of organizations and/or clinicians.

WHIO is Wisconsin’s largest supplier of health care information spanning the continuum of care.

WHIO data includes:

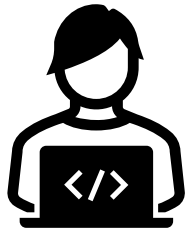
- \$60 billion in annual charges
- 4.9 million insured lives
- All geographies
- All sites of care
- All services
- All clinicians
- All insurance types
- Reference files
- Ability to work with all data types



Q. How much data does WHIO have?

A. If you put the WHIO data in Excel, you would need to use **360 fully loaded spreadsheets** at one time plus reference files.

I have never used a spreadsheet with a million rows.



1 Excel spreadsheet will hold 1,085,000 rows of data.



Aren't you glad we did that for you!

WHIO's Role in the WI Physician Value Report

FRONT END

The Business Health Care Group commissioned the WI Physician Value Study

- WHIO provided a **custom build Enhanced Data mart including 2018 and 2019 data**
- Episode Treatment Groups
- Episode Risk Groups
- Normalized Price
- Evidence Based Quality Measures

BACK END

The Business Health Care Group wanted provider organizations to have access to their results for improvement through a secured, easy to use reporting system

- WHIO is distributing the WI Physician Value Report v2 using our **secure, Applied Insights Web based reporting system**

GNSHealth completed the study analysis on behalf of the Business Health Care Group

Key Methodology Concepts

For a PCP to be included he/she needed to have ≥ 100 EBM observations related to the ETGs considered AND ≥ 30 episodes of care.

QUALITY OF CARE (PCP ONLY)

- Patients were included if they had both medical and pharmacy benefits throughout all of 2018 and 2019
- Attribution of patients to PCPs
 - Used assigned PCP if the patient had one
 - If no assigned PCP, used imputed PCP (based on most cost)
- 294 EBMs were used related to management of preventive care and diseases commonly managed by PCPs
- Quality scores for each PCP were calculated as $\frac{\text{sum}(\text{compliant EBM results})}{\text{sum}(\text{total compliant and non-compliant EBM results})}$ based on all EBMs that were relevant to that PCP's patients

COST OF CARE (PCP & SPECIALIST)

- ETGs were included in the cost-efficiency analysis if:
 - The ETG was completed;
 - They were not cost outliers (determined by outlier flag in the database)
 - there were ≥ 500 episodes for that ETG across all PCPs included in the analysis; and
 - GNSHealth believed that a PCP could reasonably be held accountable for the cost of an episode in that ETG.
- 151 different ETGs were used in the analysis
- Cost-efficiency scores were calculated for each ETG for each PCP using this formula:

$$\text{cost efficiency score} = \ln \frac{\text{predicted cost}}{\text{actual cost}}$$

Claims data is the gold standard for utilization and cost evaluation. Claims data is also used to determine if a process that is supported by research has been completed.

Rankings & Scores

- PCP's were evaluated on up to 26 clinical areas.
- Specialty procedures are below.
 - Cataract surgery
 - Vaginal deliveries
 - C-sections
 - Total hip replacement
 - Total knee replacement
 - Coronary angioplasty
 - Coronary artery bypass surgery
 - Hysterectomy
 - Cholecystectomy
 - Laminectomy and spinal fusion

Ranking (Lower is better)

| Ranking | Ranking Name | Ranking Description |
|---------|--------------------------|--|
| 1 | Outstanding Performers | 80% confident these providers perform better than the 75th percentile |
| 2 | Good Performers | 80% confident these providers perform better than the 50th percentile, but are not in Rank 1 |
| 3 | Typical Performers | Neither 80% confident performance is better than the 50th percentile nor 80% confident performance is worse than the 50th percentile |
| 4 | Below Average Performers | 80% confident performance is worse than the 50th percentile |

Score (Higher is better)

| Score | Score Description |
|------------------|---|
| Higher Performer | Actual episode cost < predicted cost, scores were > 0 |
| Cost Neutral | Actual episode cost = predicted cost, scores were = 0 |
| Lower Performer | Actual episode cost > predicted cost, scores were < 0 |

The overall score was calculated based on a weighted average of episode-specific cost-efficiency scores, using the number of disease-specific episodes attributed to the provider.

Healthcare Organization Name

Healthcare Organization Summary 2018-19 Combined

PCP

| Quality Rank | Cost Rank | Cost Efficiency Score | Quality Score | PCP Provider Count |
|--------------|-----------|-----------------------|---------------|--------------------|
| 1.9 | 2.1 | 0.08 | 0.71 | |

| Specialty | Quality Rank | Cost Rank | Cost Efficiency Score | Quality Score | PCP Provider Count |
|---------------------|--------------|-----------|-----------------------|---------------|--------------------|
| Adolescent Medicine | 1.0 | 3.0 | 0.03 | 0.76 | |
| General Practice | 1.0 | 3.0 | 0.06 | 0.88 | |
| Internal Medicine | 1.4 | 2.1 | 0.04 | 0.76 | |
| Family Medicine | 1.7 | 2.1 | 0.09 | 0.74 | |
| Pediatrics | 4.0 | 2.2 | 0.10 | 0.47 | |

Specialists

| Cost Efficiency Score Median | Cost Efficiency Score | Cost Ranking | Provider Count |
|------------------------------|-----------------------|--------------|----------------|
| -1.4 | -1.4 | 3.1 | |

| Specialty | Cost Efficiency Score | Cost Efficiency Score Median | Cost Ranking | Provider Count |
|---------------------------|-----------------------|------------------------------|--------------|----------------|
| Neurosurgery | 0.1 | 0.0 | 2.5 | |
| General Surgery | 0.0 | 0.0 | 2.6 | |
| Family Medicine | 0.0 | 0.0 | 2.9 | |
| Thoracic Surgery | 0.0 | 0.0 | 3.0 | |
| Ophthalmology | 0.0 | -0.1 | 2.6 | |
| Obstetrics and Gynecology | -0.1 | -0.1 | 3.4 | |
| Orthopedic Surgery | -5.9 | -5.9 | 3.3 | |
| Cardiology | -6.7 | -6.7 | 2.8 | |

PCP Quality and Cost Ranking by Healthcare Organization

2018-19 Combined

Rank 1 is best

- 1 Outstanding Performers
- 2 Good Performers
- 3 Typical Performers
- 4 Below Average Performers

In the chart below, provider organizations with above average quality and cost rankings are represented in blue. Clicking an organization in the table at left will highlight it on the chart at right and vice versa. Use filters to select provider organization or PCP specialty. A sort button appears when you hover over column headers. Click to sort low, high, and alphabetical results.

| Healthcare Organization | Specialty | Quality Ranking | Cost Ranking | PCP Episode Count | PCP Provider Count |
|-------------------------------|--------------|-----------------|---------------|--------------------|--------------------|
| All | All | All values | All values | All values | All values |
| Healthcare Organization | Quality Rank | Cost Rank | Episode Count | PCP Provider Count | |
| Healthcare Organization Names | 2.14 | 1.57 | | | |
| | 2.09 | 1.64 | | | |
| | 3.21 | 1.64 | | | |
| | 2.20 | 1.70 | | | |
| | 4.00 | 1.80 | | | |
| | 1.00 | 1.91 | | | |
| | 4.00 | 2.00 | | | |
| | 3.39 | 2.00 | | | |
| | 3.30 | 2.00 | | | |
| | 1.91 | 2.12 | | | |
| | 2.50 | 2.17 | | | |
| | 4.00 | 2.25 | | | |
| | 2.53 | 2.27 | | | |
| | 2.16 | 2.28 | | | |
| | 2.47 | 2.31 | | | |
| | 1.83 | 2.33 | | | |
| | 2.43 | 2.50 | | | |
| | 3.37 | 2.62 | | | |
| | 1.00 | 2.63 | | | |
| | 2.13 | 2.63 | | | |
| 1.83 | 2.66 | | | | |



PCP Quality and Cost Scores by Healthcare Organization

2018-19 Combined

Higher cost-efficiency scores are better

Scores are based on actual costs relative to predicted costs:

- Actual episode cost < predicted cost | score > 0 | **Higher performing**
- Actual episode cost = predicted cost | score = 0 | Cost neutral
- Actual episode cost > predicted cost | score < 0 | Lower performing

In the chart below, healthcare organizations with above average quality scores and actual costs less than predicted costs are represented in blue. Use filters to select healthcare organization or PCP specialty. A sort button appears when you hover over the column header. Click to sort low, high, and alphabetical results.

Healthcare Organization
All

Specialty
All

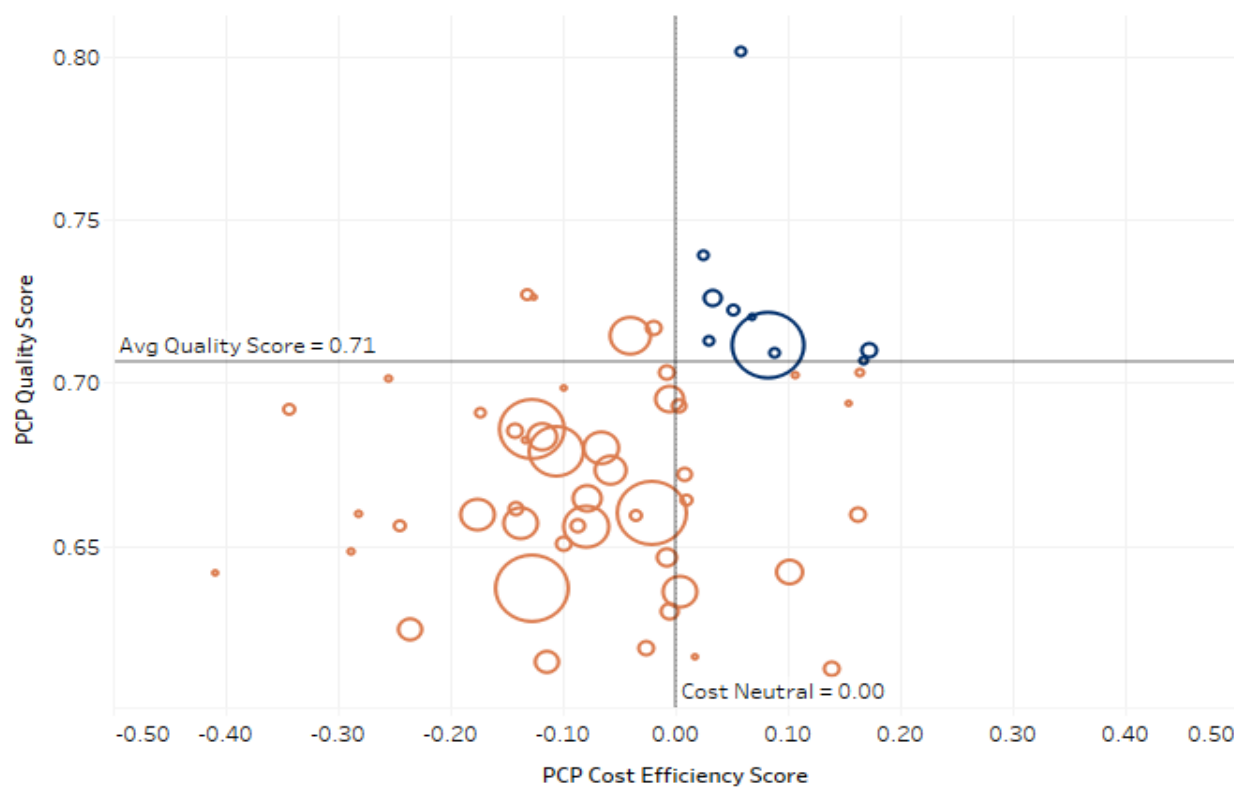
PCP Cost Efficiency Score
All values

PCP Quality Score
All values

Episode Count
All values

Provider Count
From 1

| Healthcare Organization Names | Quality Score | Cost Efficiency Score | Median Cost Efficiency Score | Episode Count | Provider Count |
|-------------------------------|---------------|-----------------------|------------------------------|---------------|----------------|
| | | 0.70 | 0.19 | 0.28 | |
| | 0.71 | 0.17 | 0.29 | | |
| | 0.71 | 0.16 | 0.26 | | |
| | 0.80 | 0.06 | 0.15 | | |
| | 0.69 | 0.13 | 0.21 | | |
| | 0.66 | 0.16 | 0.26 | | |
| | 0.70 | 0.10 | 0.26 | | |
| | 0.71 | 0.08 | 0.17 | | |
| | 0.72 | 0.07 | 0.19 | | |
| | 0.72 | 0.05 | 0.14 | | |
| | 0.73 | 0.03 | 0.17 | | |
| | 0.71 | 0.04 | 0.12 | | |
| | 0.71 | 0.04 | 0.08 | | |
| | 0.61 | 0.13 | 0.23 | | |
| | 0.64 | 0.10 | 0.19 | | |
| | 0.74 | -0.01 | 0.05 | | |
| | 0.69 | 0.01 | 0.11 | | |
| | 0.70 | 0.00 | 0.07 | | |
| | 0.72 | -0.01 | 0.08 | | |
| | 0.69 | 0.01 | 0.08 | | |
| | 0.71 | 0.00 | 0.07 | | |



PCP Cost Efficiency Scores by Clinical Condition and Healthcare Organization

2018 and 2019 Combined

Higher cost-efficiency scores are better

- Scores are based on actual costs relative to predicted costs:
- Actual episode cost < predicted cost | score > 0 | **Higher performing**
- Actual episode cost = predicted cost | score = 0 | Cost neutral
- Actual episode cost > predicted cost | score < 0 | Lower performing

In the table below, healthcare organizations with cost-efficiency scores greater than zero (cost neutral) are represented in blue. Use filters to select healthcare organization, major practice category, or condition. A sort button appears when you hover over the Healthcare Organization or condition columns. Click to sort low, high, and alphabetical results.

| Healthcare Organization | Major Practice Category | Condition | PCP Cost Efficiency Score | Episode Count | | | | | | | | |
|-------------------------------|-------------------------|--|---------------------------|---------------|------|------|------|------|------|------|------|------|
| All | All | All | All values | All values | | | | | | | | |
| Healthcare Organization Names | Cardiology | Atrial fibrillation & flutter | -1.6 | -3.5 | | | | | | | | |
| | | Cardiomyopathy | -0.2 | -1.0 | | | | | | | | |
| | | Cardiovascular diseases signs & symptoms | -0.6 | -0.9 | | | | | | | | |
| | | Congestive heart failure | -0.5 | -0.4 | | | | | | | | |
| | | Heart failure, diastolic | -0.3 | -0.3 | | | | | | | | |
| | | Hypertension | 0.1 | -0.9 | | | | | | | | |
| | | Ischemic heart disease | 0.0 | -0.5 | | | | | | | | |
| | | Non-cerebral, non-coronary atherosclerosis | -0.1 | 0.1 | | | | | | | | |
| | | Phlebitis & thrombophlebitis of veins | -1.0 | -0.6 | | | | | | | | |
| | | Alcohol dependence | -3.5 | -1.0 | | | | | | | | |
| | | Cocaine or amphetamine dependence | -0.1 | -1.0 | | | | | | | | |
| | | -0.3 | 1.2 | -0.1 | -0.4 | -0.3 | -0.9 | -0.2 | -0.8 | -0.6 | -1.0 | -0.1 |
| | | -0.6 | -0.6 | 0.6 | -0.4 | -1.1 | -0.3 | -0.5 | 0.1 | -1.5 | -0.9 | -1.0 |
| | | -0.1 | -0.7 | -0.6 | -0.3 | -0.9 | -0.1 | -0.6 | -0.4 | -0.6 | -1.0 | -1.4 |
| | | -0.4 | -0.2 | 0.0 | 0.0 | -0.5 | 0.0 | -0.8 | -0.2 | -1.1 | -1.2 | -1.7 |
| -0.8 | | 0.1 | 0.2 | -0.2 | -0.2 | -0.2 | -0.4 | | -2.6 | -2.3 | | |
| -0.4 | -0.7 | 0.1 | -0.5 | -0.7 | -0.1 | -0.5 | -0.8 | -0.2 | -1.1 | -0.9 | | |
| -0.5 | -0.8 | -0.2 | -0.5 | -1.3 | 0.1 | -0.5 | -0.4 | -0.8 | -0.6 | 0.2 | | |
| -0.4 | -0.7 | -0.2 | -0.7 | -0.4 | 0.1 | -0.4 | -0.4 | -0.6 | -1.0 | -0.9 | | |
| -0.5 | -0.7 | 0.0 | -0.3 | -0.4 | 0.1 | -0.4 | -0.4 | -0.7 | -1.1 | -1.0 | | |
| -0.2 | -0.9 | -0.5 | -0.2 | | -0.2 | -0.2 | -1.3 | -2.0 | -1.3 | | | |
| -0.7 | -0.7 | 0.0 | -0.2 | -0.8 | -0.2 | -0.6 | 0.7 | -1.2 | -1.1 | 0.9 | | |
| -0.3 | -0.5 | 0.3 | -0.5 | -0.2 | 0.1 | -0.5 | -0.2 | -0.8 | -1.1 | | | |
| -0.4 | -1.0 | 0.0 | -0.8 | -1.1 | 0.0 | -0.1 | -0.1 | -0.9 | -1.0 | 0.5 | | |
| -0.5 | -1.1 | -0.3 | -0.2 | 0.1 | -0.1 | -0.1 | -0.1 | 0.6 | -0.4 | 0.1 | | |
| -0.4 | -1.1 | -1.3 | -0.6 | 0.9 | -0.2 | -0.6 | 0.1 | | -0.6 | -2.0 | | |

PCP Quality and Cost Ranking and Scores by Individual Provider

2018-19 Combined

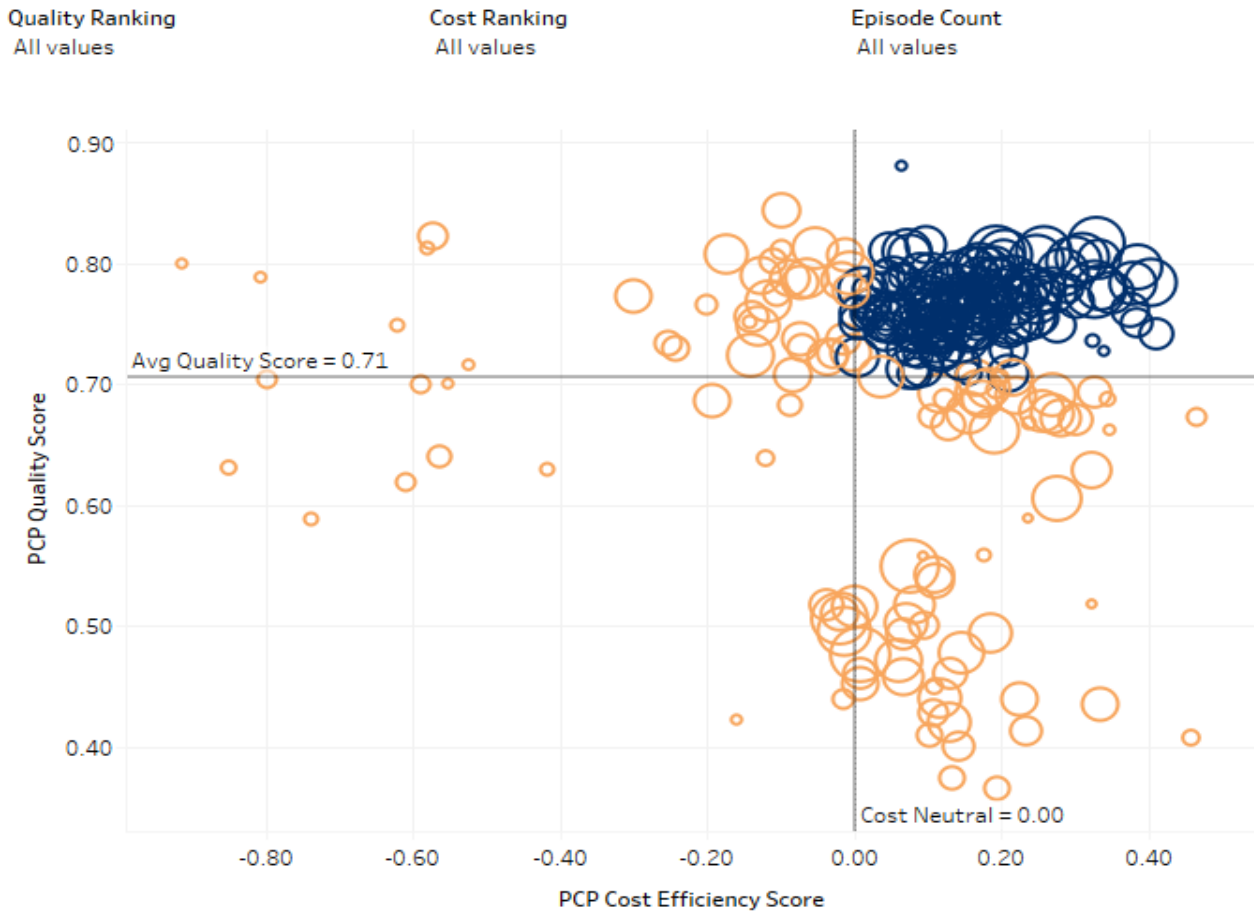
Organization Name

Rank 1 is best

- 1 Outstanding Performers
- 2 Good Performers
- 3 Typical Performers
- 4 Below Average Performers

In the chart below, provider organizations with above average quality and cost rankings are represented in blue. Clicking a provider name in the table at left will highlight scores in the chart at right and vice versa. Use filters to select provider organization or PCP specialty. A sort button appears when you hover over column headers. Click to sort low, high, and alphabetical results.

| Specialty | Provider Name | Quality Rank | Quality Score | Cost Rank | Cost Efficiency Score | Episode Count |
|-----------------|----------------------------|--------------|---------------|-----------|-----------------------|---------------|
| Family Medicine | Individual Clinician Names | 1 | 0.79 | 1 | 0.28 | |
| | | 1 | 0.78 | 1 | 0.21 | |
| | | 1 | 0.76 | 1 | 0.25 | |
| | | 1 | 0.76 | 1 | 0.18 | |
| | | 1 | 0.79 | 1 | 0.22 | |
| | | 1 | 0.81 | 1 | 0.21 | |
| | | 1 | 0.76 | 1 | 0.18 | |
| | | 1 | 0.79 | 1 | 0.18 | |
| | | 1 | 0.76 | 1 | 0.19 | |
| | | 1 | 0.76 | 1 | 0.17 | |
| | | 1 | 0.80 | 1 | 0.20 | |
| | | 1 | 0.78 | 1 | 0.19 | |
| | | 1 | 0.79 | 1 | 0.16 | |
| | | 1 | 0.75 | 1 | 0.17 | |
| | | 1 | 0.76 | 1 | 0.38 | |
| | | 1 | 0.77 | 1 | 0.22 | |
| | | 1 | 0.78 | 1 | 0.40 | |
| | | 1 | 0.75 | 1 | 0.21 | |
| | | 1 | 0.81 | 1 | 0.31 | |
| | | 1 | 0.78 | 1 | 0.33 | |
| 1 | 0.76 | 1 | 0.24 | | | |



PCP Cost Efficiency Scores by Clinical Condition and Individual Provider

2018 and 2019 Combined

Organization Name

Higher cost-efficiency scores are better

- Scores are based on actual costs relative to predicted costs:
- Actual episode cost < predicted cost | score > 0 | **Higher performing**
- Actual episode cost = predicted cost | score = 0 | Cost neutral
- Actual episode cost > predicted cost | score < 0 | Lower performing

In the table below, individual providers with above average quality scores and actual costs less than predicted costs are represented in blue. Use filters to select provider, Entity Type, Specialty, and Condition. A sort button appears when you hover over the Healthcare Organization and condition column headers. Click to sort low, high, and alphabetical results.

Provider Name All Entity Type All Specialty All Major Practice Category All Condition All PCP Cost Efficiency Score All values Episode Count All values

| Specialty | Provider Name | Cardiology | | | | | | | | | | Chemical d |
|-----------------|----------------------------|-------------------------------|----------------|--|--------------------------|--------------------------|--------------|------------------------|--|---------------------------------------|------|------------|
| | | Atrial fibrillation & flutter | Cardiomyopathy | Cardiovascular diseases signs & symptoms | Congestive heart failure | Heart failure, diastolic | Hypertension | Ischemic heart disease | Non-cerebral, non-coronary atherosclerosis | Phlebitis & thrombophlebitis of veins | | |
| Family Medicine | Individual Clinician Names | | 0.5 | | -0.9 | | 0.8 | | | | | |
| | | | | | | | -0.5 | 0.9 | | | | |
| | | | 0.6 | 1.5 | 0.3 | 0.2 | -1.0 | 0.4 | 0.6 | 0.5 | 0.7 | |
| | | | -0.4 | -0.6 | 0.3 | 0.5 | 1.2 | 0.3 | 0.0 | -0.5 | | |
| | | | 1.1 | | 0.8 | -0.5 | -1.4 | 0.2 | -0.2 | 0.9 | | |
| | | | 1.1 | 0.6 | 0.5 | -0.8 | -0.3 | 0.1 | -0.8 | 0.3 | -1.2 | |
| | | | 0.3 | -0.6 | 0.6 | -1.1 | 0.3 | 0.2 | 0.6 | 0.0 | | |
| | | | 0.6 | 0.5 | 0.3 | -0.4 | 0.2 | 0.2 | 0.0 | -1.0 | | |
| | | | 0.2 | 0.1 | 0.8 | 0.3 | 0.1 | 0.4 | 0.5 | -0.2 | | |
| | | | 0.2 | | 0.9 | -1.5 | 0.1 | 0.4 | 0.6 | -0.1 | 0.6 | |
| | | | 0.3 | -0.1 | -0.2 | 0.6 | -0.8 | 0.4 | 0.1 | 0.1 | -1.4 | |
| | | | 1.0 | -1.1 | 0.4 | -0.8 | 1.2 | 0.3 | -0.3 | 0.1 | -0.4 | |
| | | | -0.1 | -1.4 | 1.1 | 0.4 | 1.4 | 0.4 | 0.5 | -0.1 | 0.1 | |
| | | | 0.7 | | 0.6 | -0.4 | -0.2 | 0.3 | 0.7 | 0.3 | | |
| | | | 0.2 | 0.0 | 0.2 | 0.1 | 0.2 | 0.4 | 0.1 | 0.4 | 0.2 | |

Specialist Cost Ranking by Healthcare Organization

2018-19 Combined

Rank 1 is best

- 1 Outstanding Performers
- 2 Good Performers
- 3 Typical Performers
- 4 Below Average Performers

In the table below, healthcare organizations with above average quality scores and actual costs less than predicted costs are represented in blue. Use filters to select provider organization or select specialty. A sort button appears when you hover over the Healthcare Organization and condition column headers. Click to sort low, high, and alphabetical results.

Healthcare Organization
All

Specialty
All

Procedure
All

Cost Ranking
All values

Episodes

Provider Count
All values

| Healthcare Organization | Family Medicine | | Obstetrics and Gynecology | | | Cardiology | General Surgery | Neurosurgery | Orthopedic Surgery | | |
|-------------------------|------------------|-------------------|---------------------------|-------------------|--------------|------------|-----------------|------------------------|------------------------|-------------|--------------|
| | Vaginal Delivery | Caesarean section | Vaginal Delivery | Caesarean section | Hysterectomy | PTCA | Cholecystectomy | Fusion and Laminectomy | Fusion and Laminectomy | Hip Surgery | Knee Surgery |
| | 1.5 | 1.3 | | | | | | | | | |
| | 1.7 | | | | | | | | | 2.0 | |
| | 2.0 | 2.0 | | | | | | | | | |
| | 2.8 | 1.0 | | | | | | | | | |
| | 2.3 | 2.2 | | | | | | | | | |
| | 2.2 | 2.6 | 2.5 | 2.0 | | 3.0 | 2.0 | | | 4.0 | 3.0 |
| | 2.6 | 2.0 | | | | | | | | | |
| | 4.0 | | 2.9 | 2.6 | 1.8 | 2.6 | 2.9 | 2.0 | 3.0 | 2.3 | 1.9 |
| | | | 2.5 | 1.5 | | | 3.7 | | | 2.6 | 2.5 |
| | 2.5 | 2.3 | 2.6 | 2.4 | 2.5 | 2.8 | 2.6 | 3.0 | 3.3 | 2.8 | 2.9 |
| | 2.4 | 2.4 | 2.9 | 3.2 | 3.3 | 2.5 | 2.6 | 3.2 | 2.0 | 2.6 | 2.5 |
| | 2.5 | 3.0 | 1.0 | | | 2.8 | 2.7 | | | 2.9 | 2.0 |
| | 3.0 | 3.0 | 2.5 | 2.0 | | 3.0 | 3.0 | | | | |
| | 2.0 | | | | | | | | | | |
| | 3.0 | | 2.5 | 2.0 | | 3.0 | 3.0 | 3.0 | | | |
| | 2.9 | 2.3 | | | | | | | | | |
| | 3.5 | 2.0 | 3.2 | 2.7 | 2.4 | 2.6 | 2.5 | 3.0 | 3.0 | 2.2 | 2.3 |
| | | | | | | 3.0 | 3.0 | 3.2 | | 3.0 | 2.6 |

Healthcare Organization Names

Specialist Cost Ranking by Individual Provider

2018 and 2019 |

Organization Name

- Rank 1 is best**
- 1 Outstanding Performers
 - 2 Good Performers
 - 3 Typical Performers
 - 4 Below Average Performers

In the table below, individual providers with outstanding and good rankings represented in blue. Use filters to select specialist or select specialty. A sort button appears when you hover over the provider and year column headers. Click to sort low, high, and alphabetical results.

Provider Name All Entity Type All Specialty All Procedure All Cost Ranking All values Episode Count All values

| Provider Name | Neurosurgery | | Ophthalmology | | General Surgery | | Orthopedic Surgery | | | | Family Medicin | |
|----------------------------|------------------------|------|------------------|------|-----------------|------|------------------------|-------------|------|--------------|----------------|----------------|
| | Fusion and Laminectomy | | Cataract Surgery | | Cholecystectomy | | Fusion and Laminectomy | Hip Surgery | | Knee Surgery | | Vaginal Delive |
| | 2018 | 2019 | 2018 | 2019 | 2018 | 2019 | 2018 | 2018 | 2019 | 2018 | 2019 | 2018 |
| Individual Clinician Names | | | 1 | 1 | | | | | | | | |
| | | | 1 | 1 | | | | | | | | 1 |
| | | | 1 | 1 | | | | | | | | |
| | | | 1 | 1 | | | | | | | | |
| | | | | | 1 | 1 | | | | | | |
| | | | | | | | | | | | | 1 |
| | | 1 | 1 | | | | | | | | | |
| | | | | | | | 2 | 1 | | | | |
| | | | | | 1 | 3 | | | | | | |
| | | | | | 2 | 2 | | | | | | |

How to Use the Report Information

HEALTHCARE ORGANIZATION INFORMATION

- Wisconsin Benchmarks
 - Benchmark your organization's performance to other organizations with similar characteristics (e.g. size, urban)
 - Benchmark your organization's performance to other organizations in your market
- Identify clinical conditions and/or procedures where your organization is performing well and those that you might consider for an improvement activity

INDIVIDUAL CLINICIAN INFORMATION

- Benchmark your individual clinicians to their peers
 - Reward higher performers (e.g., financial, leadership roles, recognition)
- Share the results with your clinicians
 - Ask your higher performers to share their care patterns with their colleagues to facilitate a discussion
 - Have a conversation with your lower performers to understand their care processes
- Build quality and cost-efficiency into your physician recruitment process

For more information about the WHIO or the WI Physician Value Report v2,
please contact WHIO at info@whio.org or 608-442-3876.