



Adult Immunizations

Business Health Care Group (BHCG)

April 25, 2012

Cathy Edwards

Immunization Program Advisor

Wisconsin Department of Health Services

Division of Public Health





Adult Immunizations

WHY Immunize?

- Vaccine preventable diseases cause significant illnesses that can be easily spread to others
- Immunizations are needed across the age spectrum
- Indications change as age and/or health status changes
- Vaccinations are an important part of maintaining a healthy workforce



Immunization Goal for Children

Completion Primary Series

- National Goals
 - 90% completion of primary series by age 2
- Wisconsin (WI) coverage
 - 84% complete by age 2 **
 - WI received highest coverage rates award by National Immunization Survey (NIS 2012)
- Milwaukee County-59% completion rate *

- *Wisconsin Immunization Registry (WIR) 2009 Birth Cohort
- **National Immunization Survey 2012



National Immunization Rates Adolescents ages 13-17 years

- 49%- one dose of Human Papilloma Virus(HPV)
- 32%- for completion of HPV series
- 63%- for Meningococcal
- 69% -for *Tdap

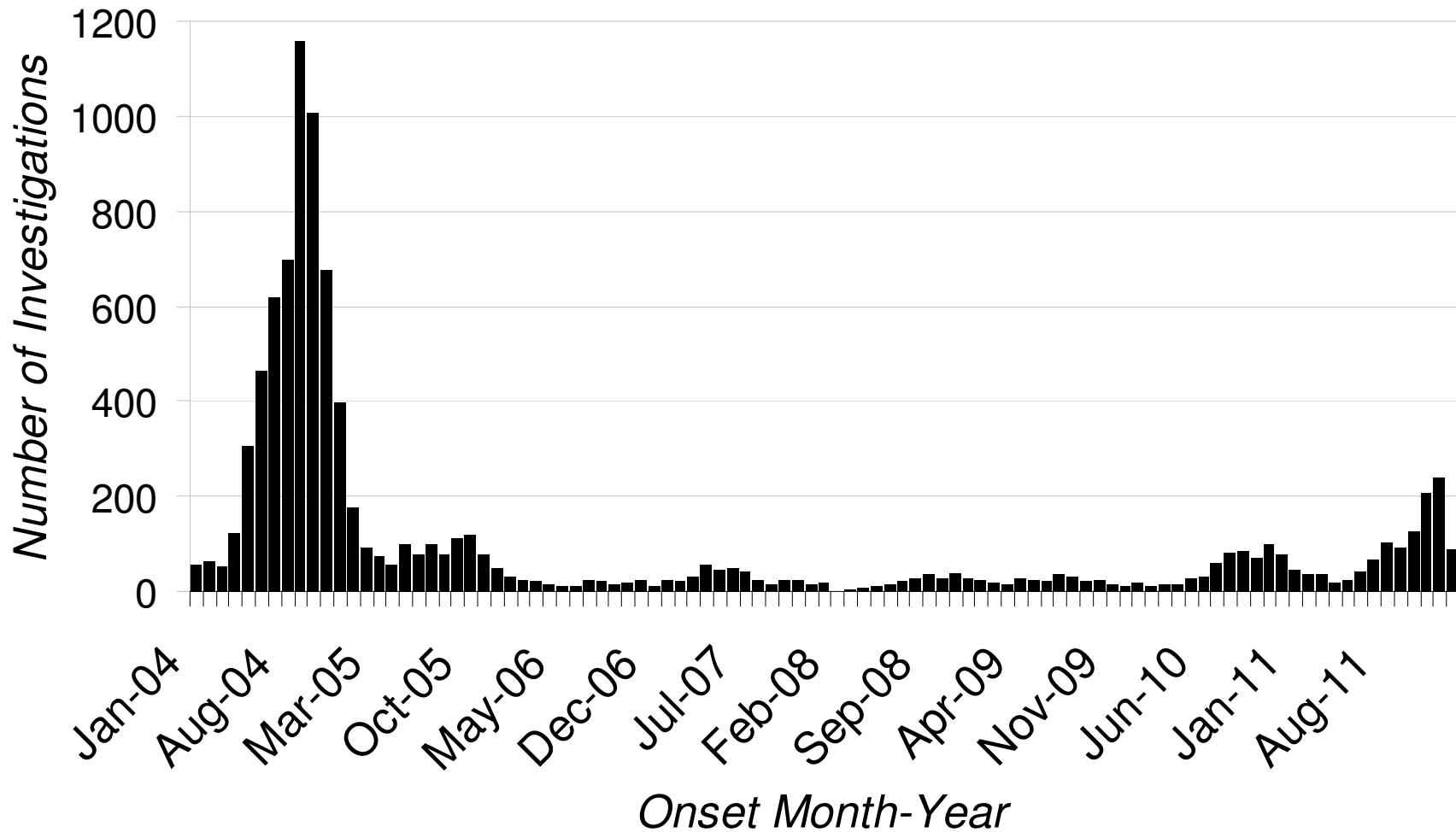
- *Tetanus Toxoid, Reduced Diphtheria Toxoid and Acellular Pertussis
- Source: 2010 National Health Interview Survey



Adult Immunization Rates

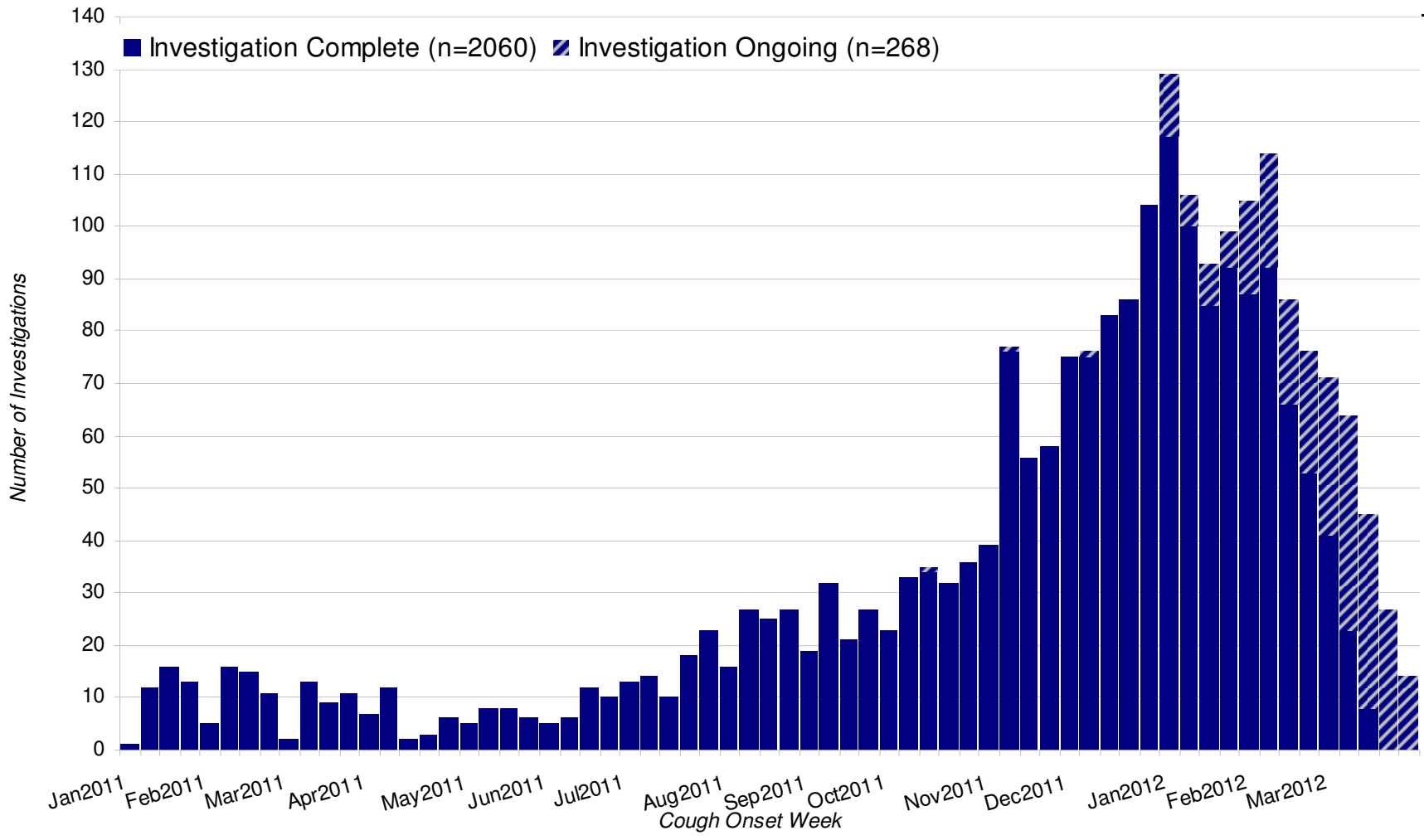
- 8.2% of adults have received a Tdap (pertussis, whooping cough)
- 14.8% of adults had received zoster vaccine (shingles)
- 19-49=26%, 50-64=43% Age Group 65+ =69% had received influenza vaccine
- Source: 2010 National Health Interview Survey

Number of Confirmed and Probable Pertussis Cases, Wisconsin, 1/1/04-2/2/12

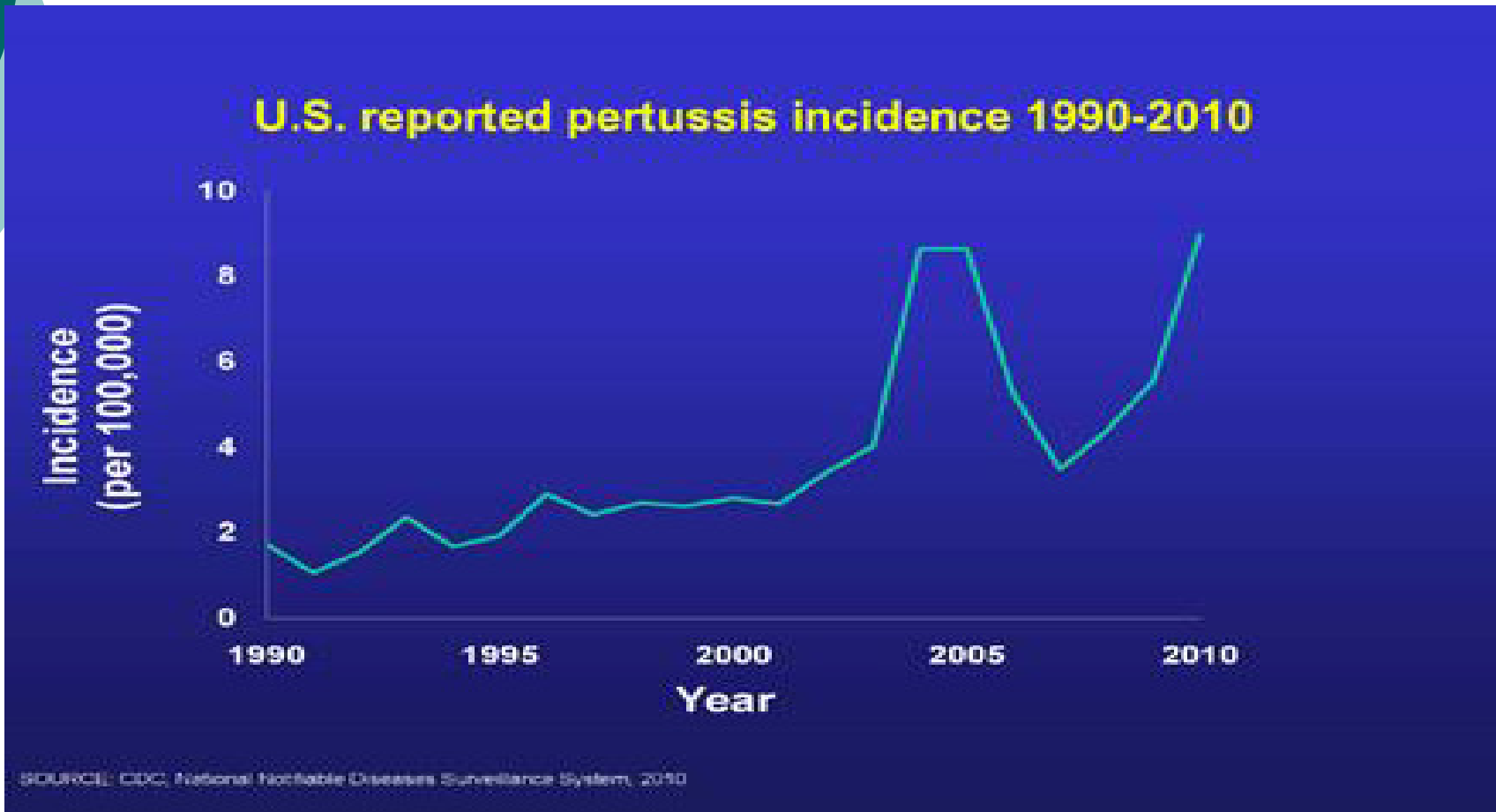


Source: Wisconsin Electronic Disease Surveillance System (WEDSS). as of 2/6/2012

Number of pertussis investigations reported by week of cough onset and status of the investigation, Wisconsin, 1/1/2011- 3/29/2012 (N=2,328)



US Reported Pertussis Incidence 1990 - 2010



Pertussis Source to Infant Age Distribution





Direct and Indirect Costs of Pertussis in Adults

Causes substantial direct costs in adults¹:

- Medical costs range between \$243-\$338
(mild versus severe cough) 1 dose DTaP approx. \$23

Indirect costs in adults²:

- Mean loss of work days for adults: 7
- Mean # of medical visits for pertussis: 2.5
- 2% of adults were hospitalized
 - mean duration of stay was 3 days
- 6% of adults ≥ 50 years old were hospitalized
 - mean duration of stay was 17 days

1 Lee GM et al. *Clinical Infectious Disease*. 2004;39:1572.

2 De Serres et al. *Journal of Infectious Diseases* 2000;182:174 (Source)



Influenza

- Significant source of morbidity and mortality
- Highest rates of influenza-associated deaths are in the very young, the elderly, pregnant women and those with underlying medical conditions



Other ACIP Immunization Recommendations for Adults - Overall

Age Specific:

- Human Papillomavirus
 - 11 to 26 years for females
 - 11 to age 26 for males* (new)
- Zoster (Shingles)- age ≥ 60 years
- Pneumococcal- age ≥ 65 years

* Routine to age 21 years, permissive to 26 years

Zoster (Shingles)



- Reactivation of the chickenpox virus that occurs later in life
- Results in an infectious, painful rash, usually on one part of the body
- Approximately 1 in 3 individuals will develop zoster



Adult Immunization Barriers

- People believe immunization are no longer necessary
- Complicated Schedules (tracking)
- Cost of vaccines- Vaccine for Children(VFC), commercial, self pay
- Vaccine hesitant parents and providers
- Access to primary care services



Adult Immunization Strategies

- School and Daycare Entry Laws
- WI Immunization Registries (WIR)
- Non traditional immunization settings
i.e. pharmacies, Cocooning Programs
- Population based assessments in public
and private local settings
- Active broad based coalitions



Questions?

○ Additional Resources

- Centers For Disease Control
<http://www.cdc.gov/>
- CDC Vaccines Webpage
<http://www.cdc.gov/vaccines/recs/schedules/child-schedule.htm#printable>
- www.immunize.org
- www.dhs.wisconsin.gov/immunization/